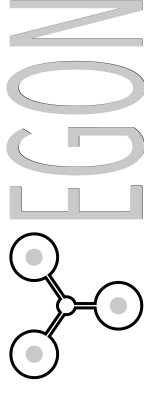


DC-HUB CONNECTIONS AND LAYOUT GUIDE



PREVENT FIRE • FOLLOW THIS GUIDE • NOT FOR EXTERNAL MOUNTING • MOUNT BRACKET AVAILABLE

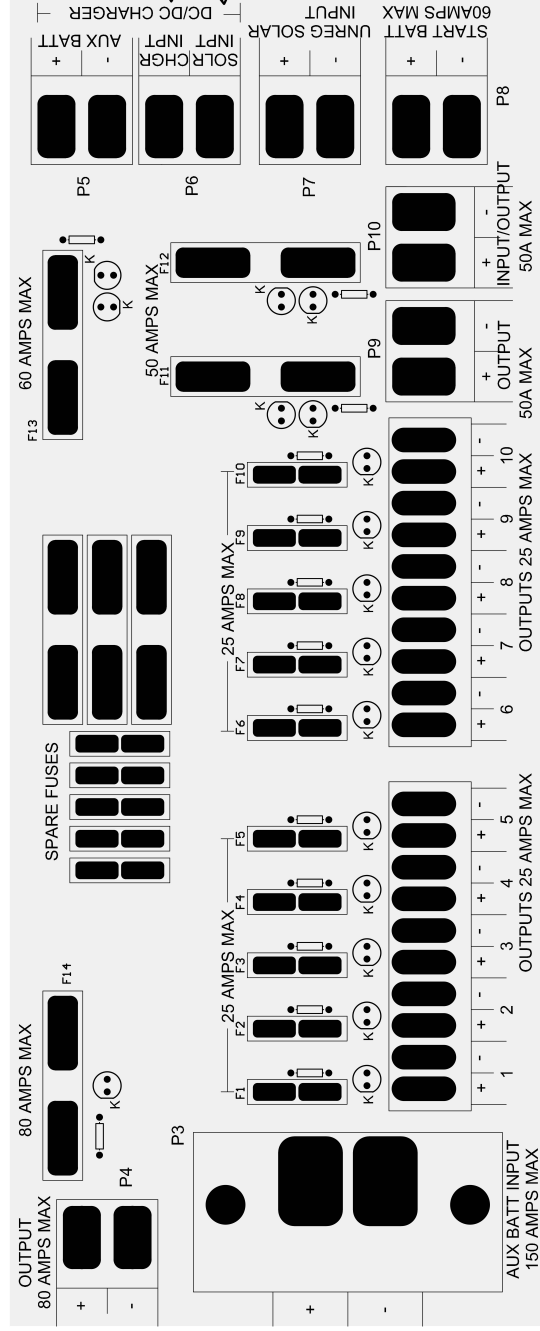
A CHARGED 12V BATTERY CAN STORE ENOUGH ENERGY TO START A FIRE, WHICH IS DIFFICULT TO PUT OUT. Accidental fire-causing short-circuits can happen at any time. These two rules will go a very long way to prevent a fire:
 Use fuses at the battery. ALWAYS!
 Use cables that are the correct thickness/gauge. ALWAYS. (see chart)



80-amp output
 Use for items such as an inverter (max 700W) or trailer. It is NOT suitable for a winch.

Connect the auxiliary/second battery here. There **MUST** be a 150A fuse at the battery. Do not use cables that are too thin.

Using cables that are too thin cause grave risk of fire and cause voltage drop, which may cause equipment to malfunction. Use the supplied cable guide to make sure your wiring is the correct thickness/gauge.



These 10 connectors are for items like the fridge, lights, fan, USB outputs, water boilers, auxiliary power, etc. They are NOT suitable for high-current items such as inverters, compressors and a trailer. Max 25A each. Do not exceed.

These two 50A connectors are for high-demand items like a compressor, inverter (max 350W). Also well suited to a fridge. Max 50A each. Do not exceed.

NB. CABLES RUNNING FROM ALL BATTERIES. MUST BE FUSED AT THE BATTERIES.

IMPORTANT MAINTENANCE
 Make sure all cable and mount screws are TIGHT!
 Do periodic checks to make sure all connections are TIGHT, especially with high-vibration applications.
 Loose connections can lead to high temps and even fires.

ATTACHING YOUR WIRING. IMPORTANT !!
 Strip just enough insulation before inserting cable.
 Push the cable in as far as it can go to ensure the best connection and lowest voltage drop.

RED LEDs only illuminate when a load is connected to the circuit, and the fuse is broken or removed. They do not illuminate if nothing is wired to the circuit. (i.e. no load)
 They do not illuminate if the auxiliary battery is disconnected.